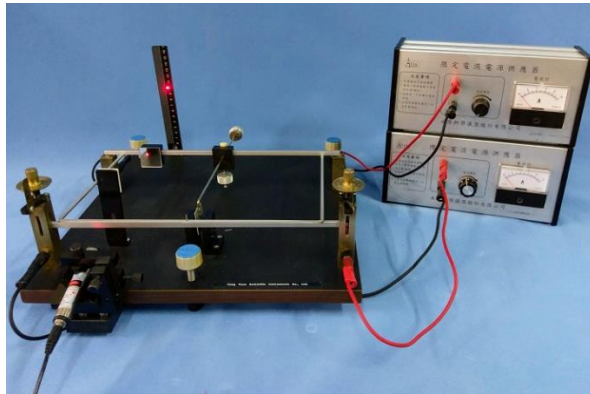


Determination of Current Magnetic



Specification:

NO	Name	Quantity
1	Current magnetic tester (attached adjustable steady laser base × 1, direct current rod × 1, spirally adjustment copper column × 2, optical measurement × 1)	1set
2	square current balance	1set
3	set of weight	1set
4	5A limiting current power supplier (attached power cord × 1, banana plug wire × 2)	2pack
5	Banana plug wire	1set
6	Red laser (attached DC3V power supply)	2set